

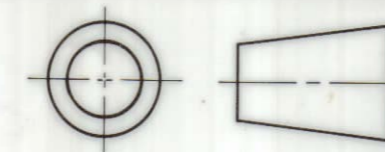
**TOLERANCES**

UNLESS OTHERWISE SPECIFIED

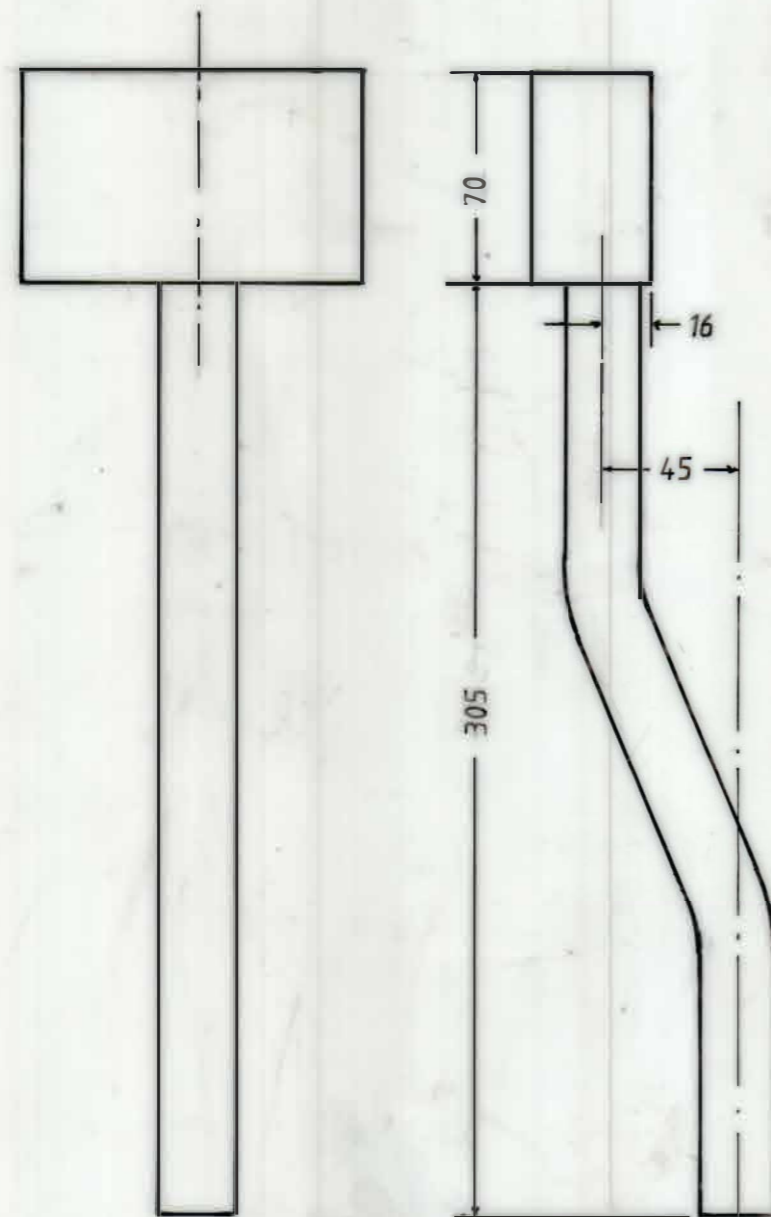
**DECIMALS**  
 NO DECIMAL PLACE ± 0.25  
 ONE DECIMAL PLACE ± 0.10  
 TWO DECIMAL PLACES ± 0.05

**ANGLES**  
 EXPRESSED IN DEGREES ± 1°  
 EXPRESSED IN DEGREES AND MINUTES ± 0° 30'

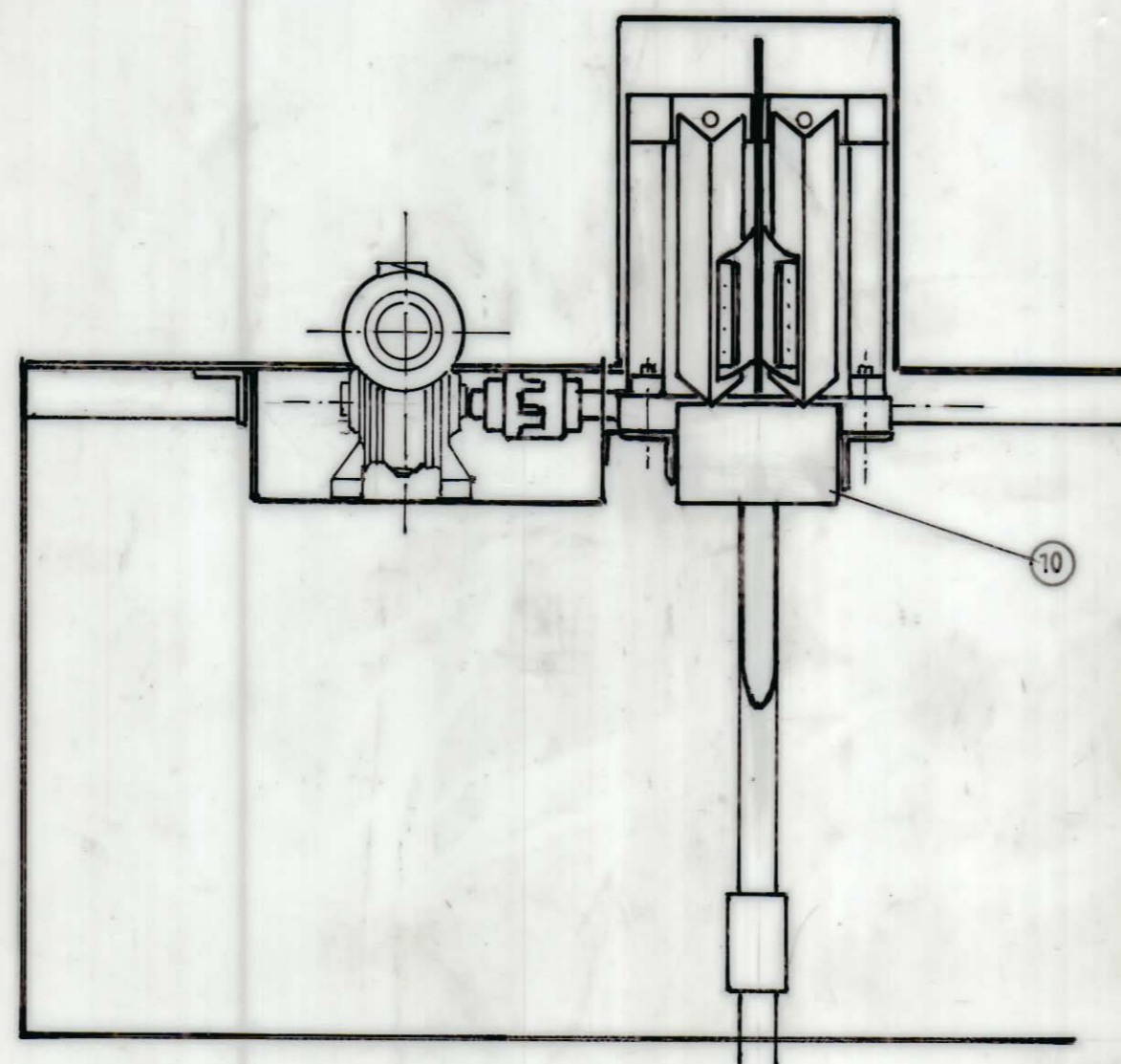
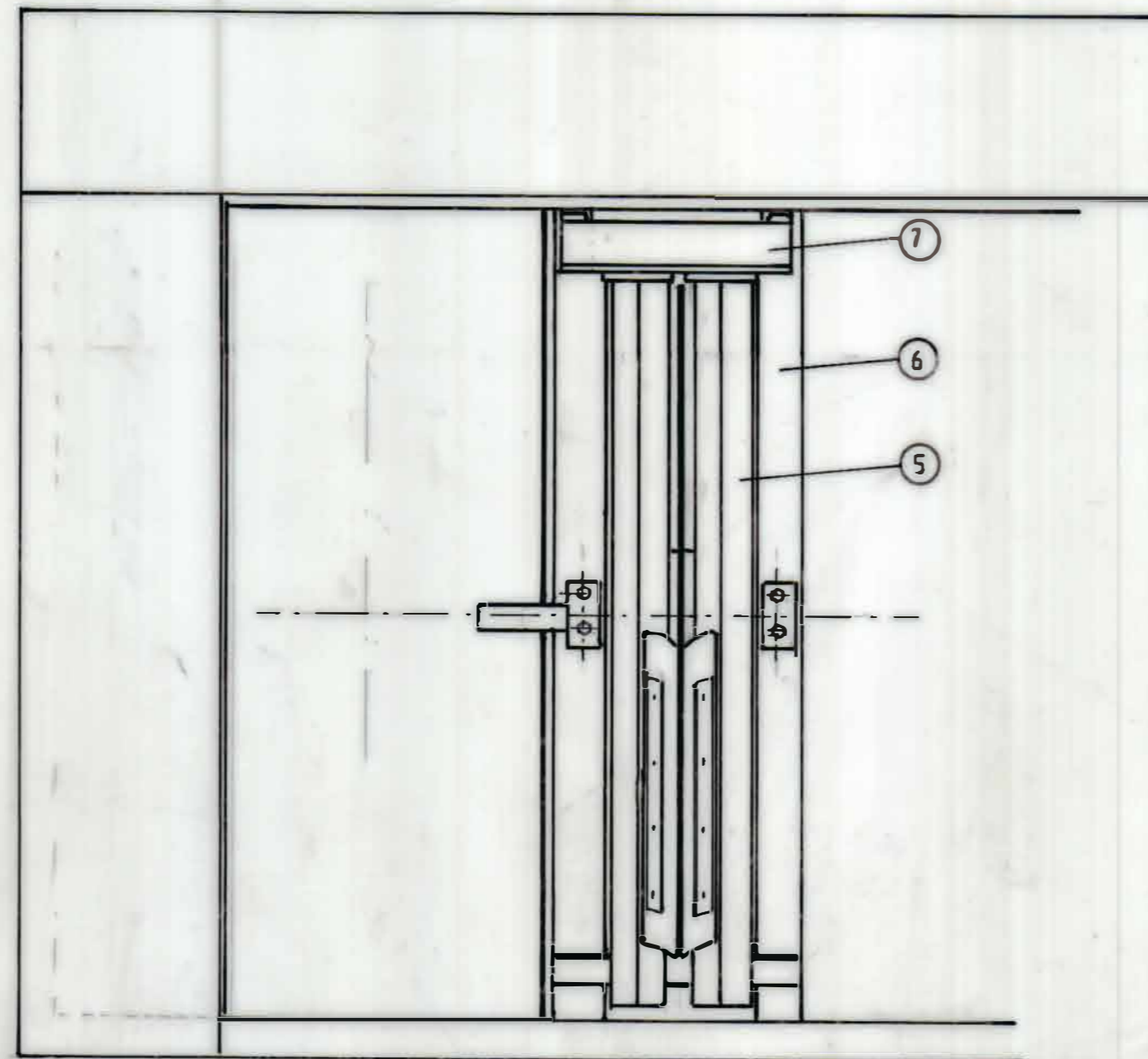
**APPLIED STANDARD**  
 AS 1100



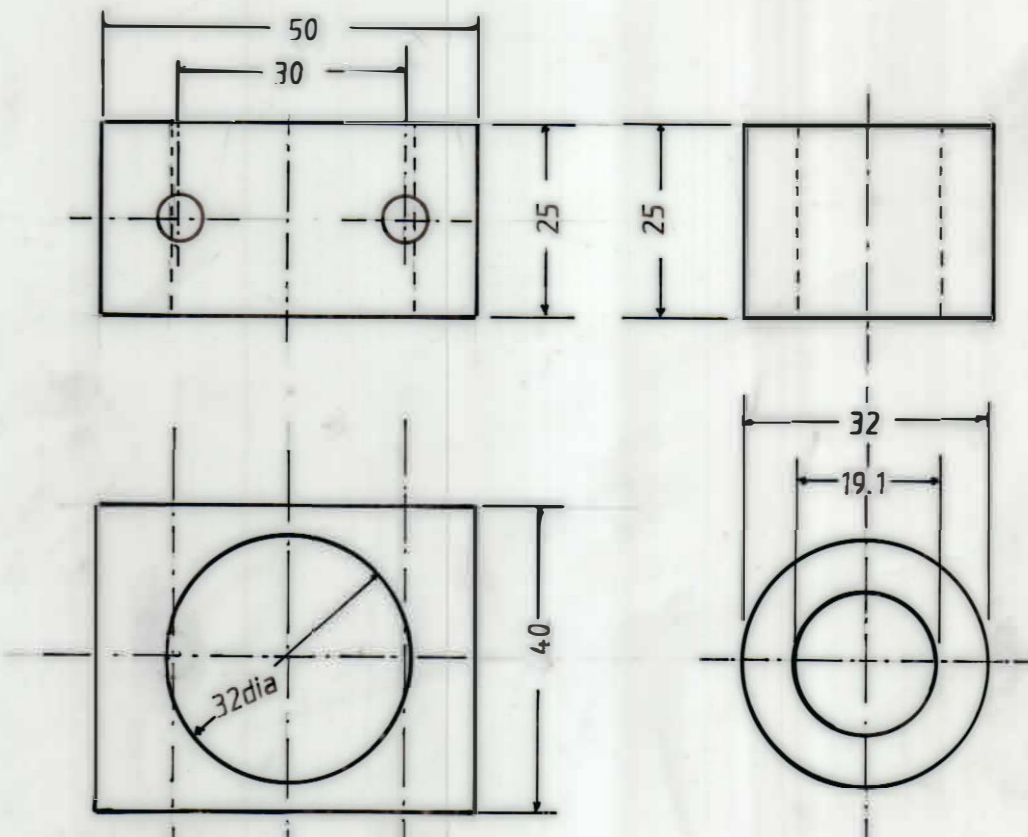
DIMENSIONS IN mm UNLESS OTHERWISE SPECIFIED. **DO NOT SCALE**  
 SURFACE TEXTURE  $\sqrt{R}$  UNLESS OTHERWISE SPECIFIED  
 REMOVE ALL SHARP EDGES AND BURRS UNLESS OTHERWISE SPECIFIED



ITEM 10, 16g Copper trough and drain  
 Silver solder all joints.



SECTION A - A.

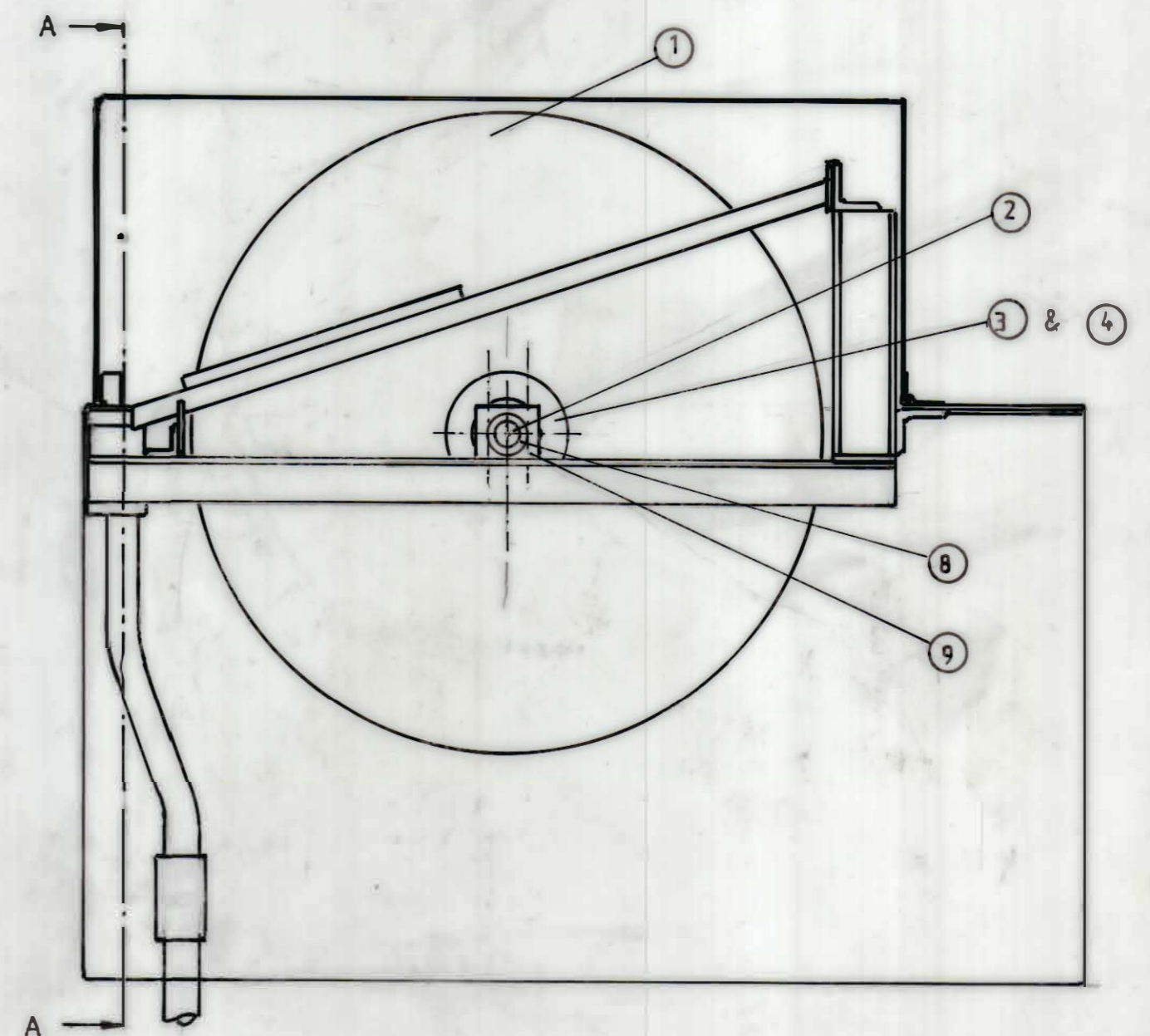


ITEM 9, Aluminium bearing block.

2 Required.

ITEM 8, PTFE Bush

2 Required.



ISSUE No.	
MADE BY	
DATE	
A.A. No.	

**A N U ENGINES.**  
**OIL SKIMMER ASSEMBLY.**

SCALE	DATE	DRAWN
CHECKED	29 July '91	P. K. S. [Signature]
REFERENCE	PASSED	APPROVED

RESEARCH SCHOOL OF PHYSICAL SCIENCES  
 AUSTRALIAN NATIONAL UNIVERSITY

SHEET 1 OF 2  
 DRAWING No.

**A2**