

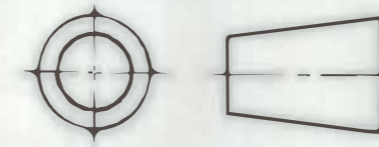
TOLERANCES

UNLESS OTHERWISE SPECIFIED

DECIMALS
 NO DECIMAL PLACE ± 0.25
 ONE DECIMAL PLACE ± 0.10
 TWO DECIMAL PLACES ± 0.05

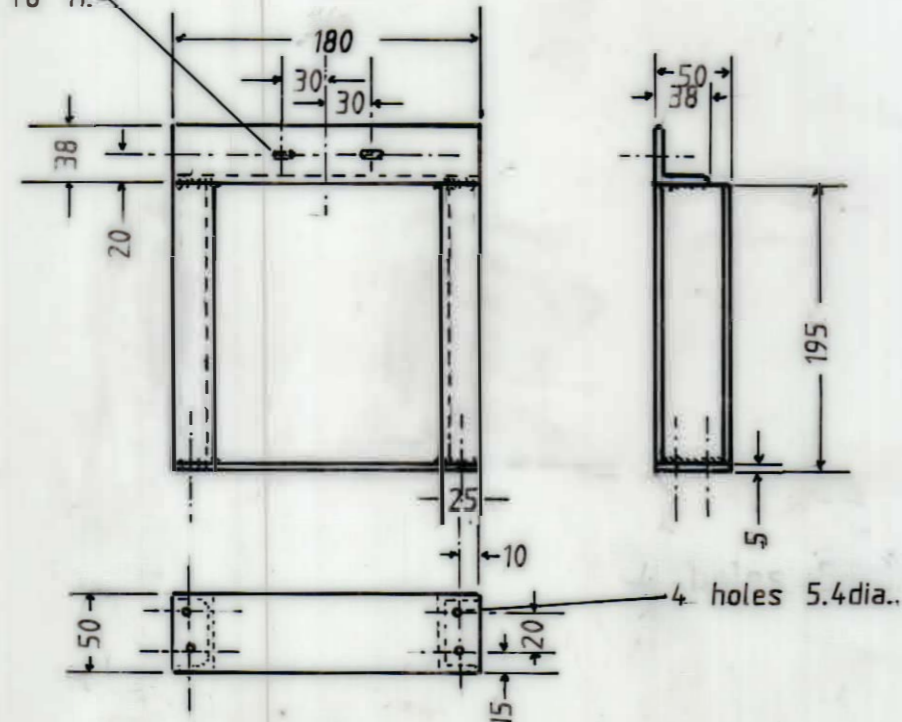
ANGLES
 EXPRESSED IN DEGREES ± 1°
 EXPRESSED IN DEGREES AND MINUTES ± 0° 30'

APPLIED STANDARD
 AS 1100

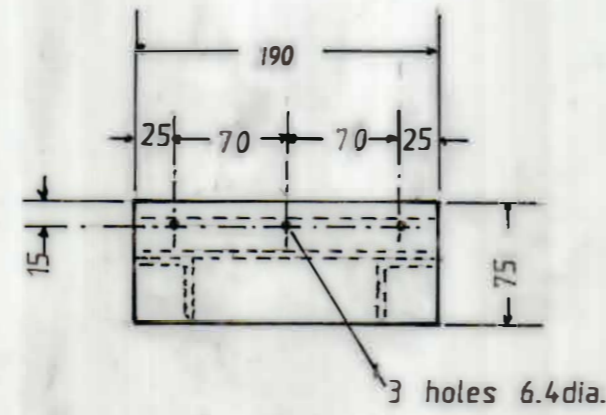


DIMENSIONS IN mm UNLESS OTHERWISE SPECIFIED. *DO NOT SCALE*
 SURFACE TEXTURE \sqrt{R} UNLESS OTHERWISE SPECIFIED
 REMOVE ALL SHARP EDGES AND BURRS UNLESS OTHERWISE SPECIFIED

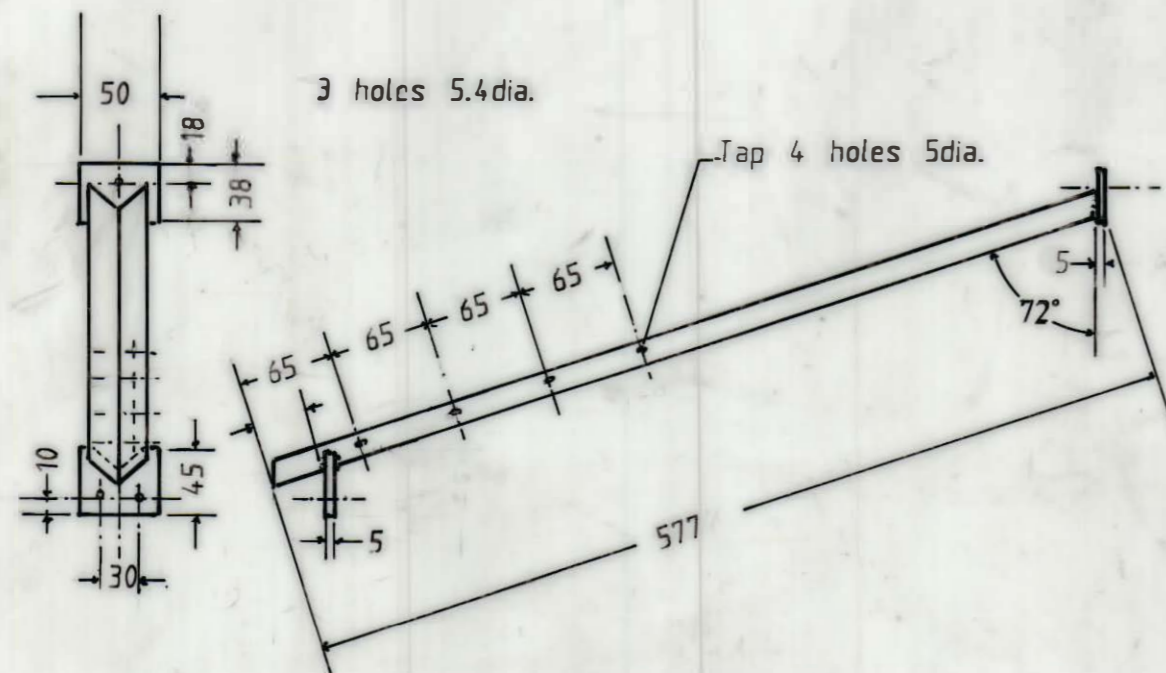
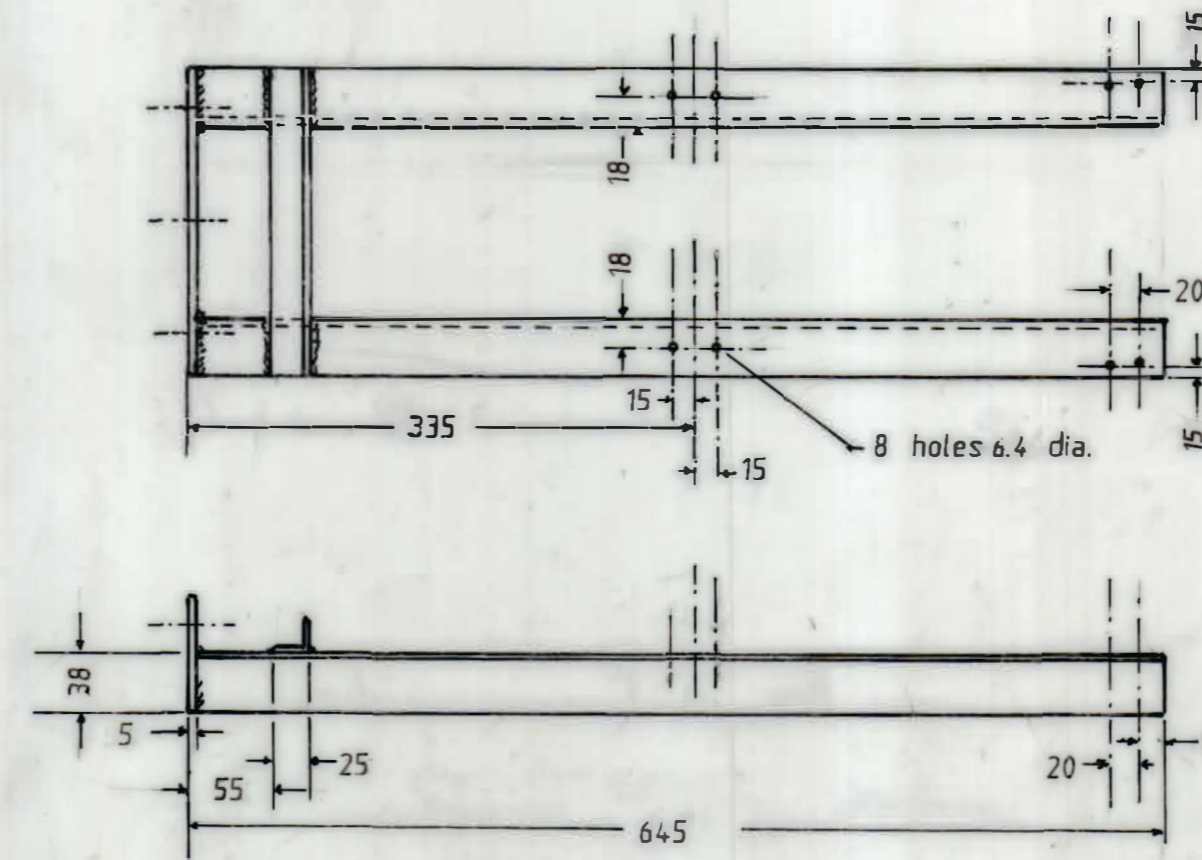
2 holes 6.4 dia elongated to 11.



ITEM 7, Aluminium channel 25x50x3
 Aluminium angle 38x38x3
 Aluminium plate 200x50x5

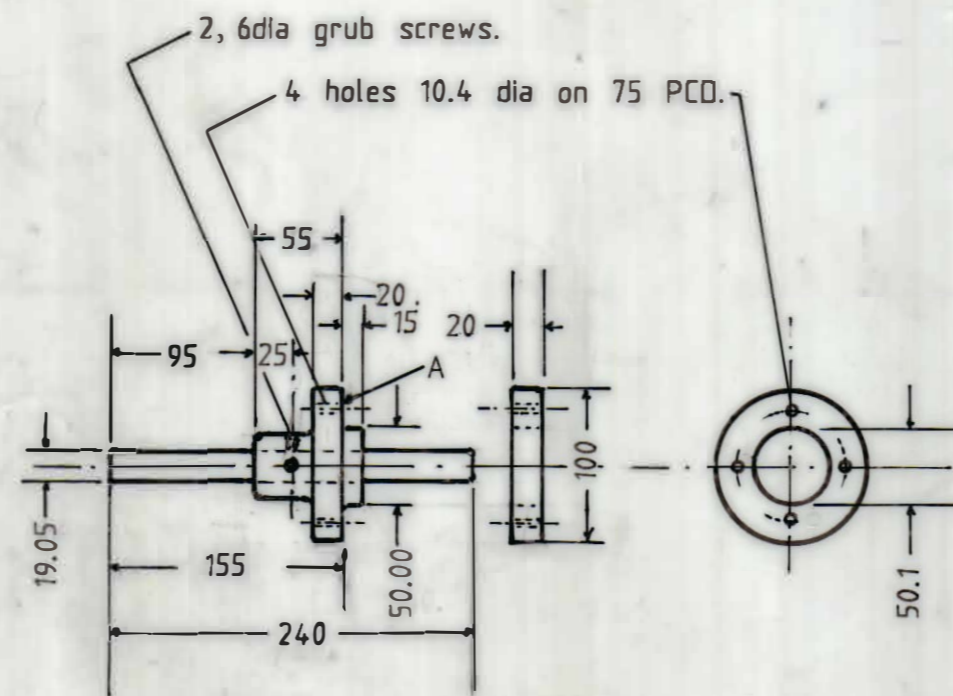


ITEM 6, Aluminium angle 38x38x3 & 25x25x3
 Aluminium plate 200x75x5.



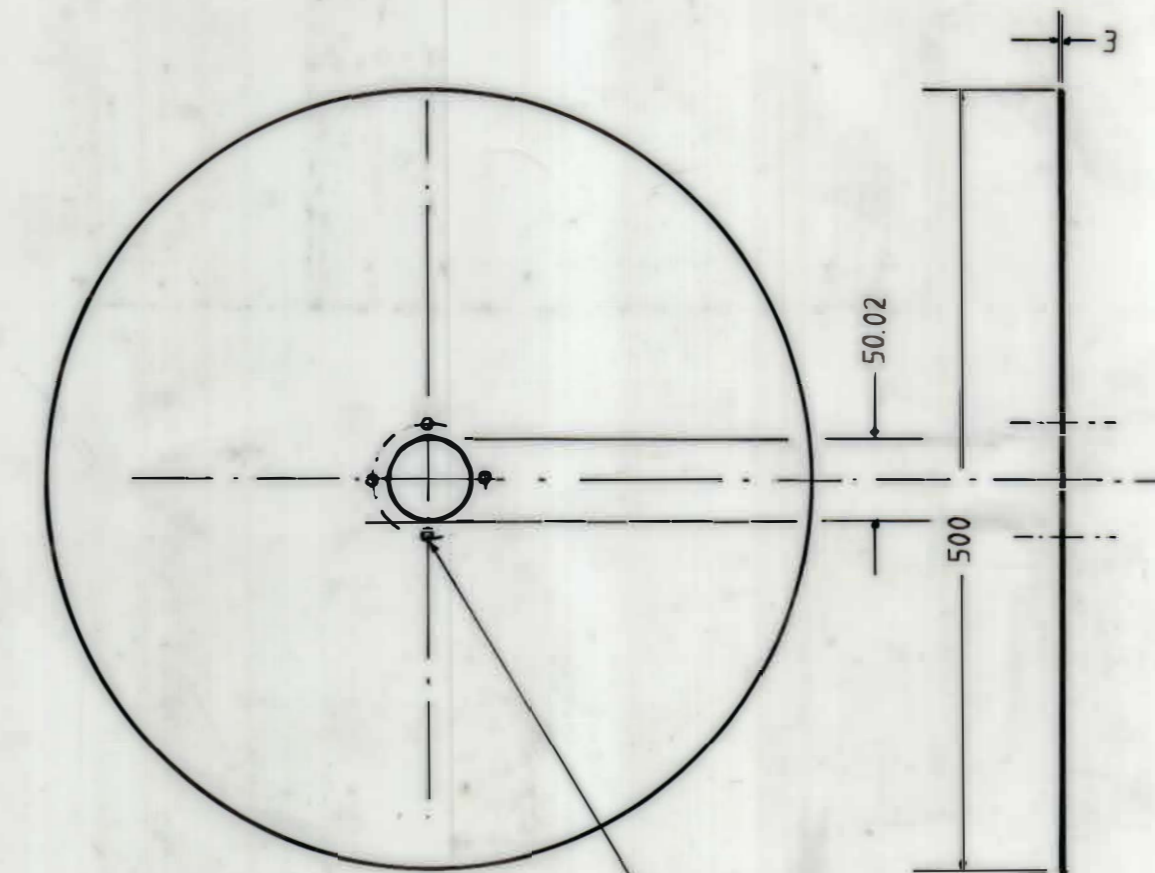
ITEM 5, Aluminium angle 25x25x3
 Aluminium plate 50x6

REQUIRED - 2 off. Tapped holes as shown in one, on left side in other.



ITEMS 2&3, Brass hub and stainless steel shaft. ITEM 4, Brass clamp ring.

Fix hub to shaft with Locktite and set screws, then turn face A square to shaft.



ITEM 1, Stainless steel disc.

Select flat sheet and do not buckle while cutting.

ISSUE No.		A N U ENGINES.		SCALE	DATE	DRAWN	RESEARCH SCHOOL OF PHYSICAL SCIENCES AUSTRALIAN NATIONAL UNIVERSITY
MADE BY				1/5	25 July 91	E. K. S.	
DATE		OIL SKIMMER DETAILS.		CHECKED	PASSED	APPROVED	SHEET 2 OF 2
A.A. No.				REFERENCE			