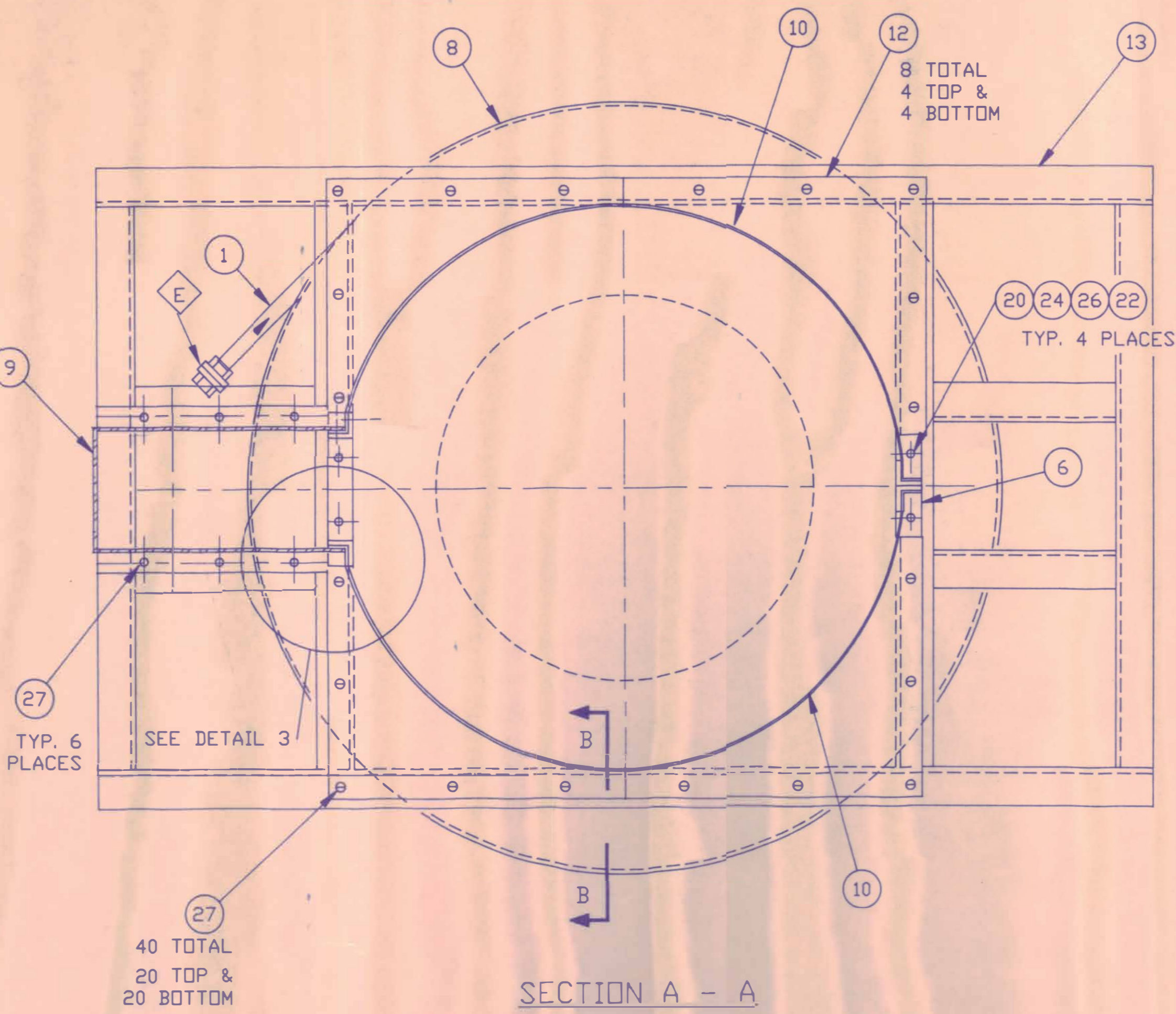
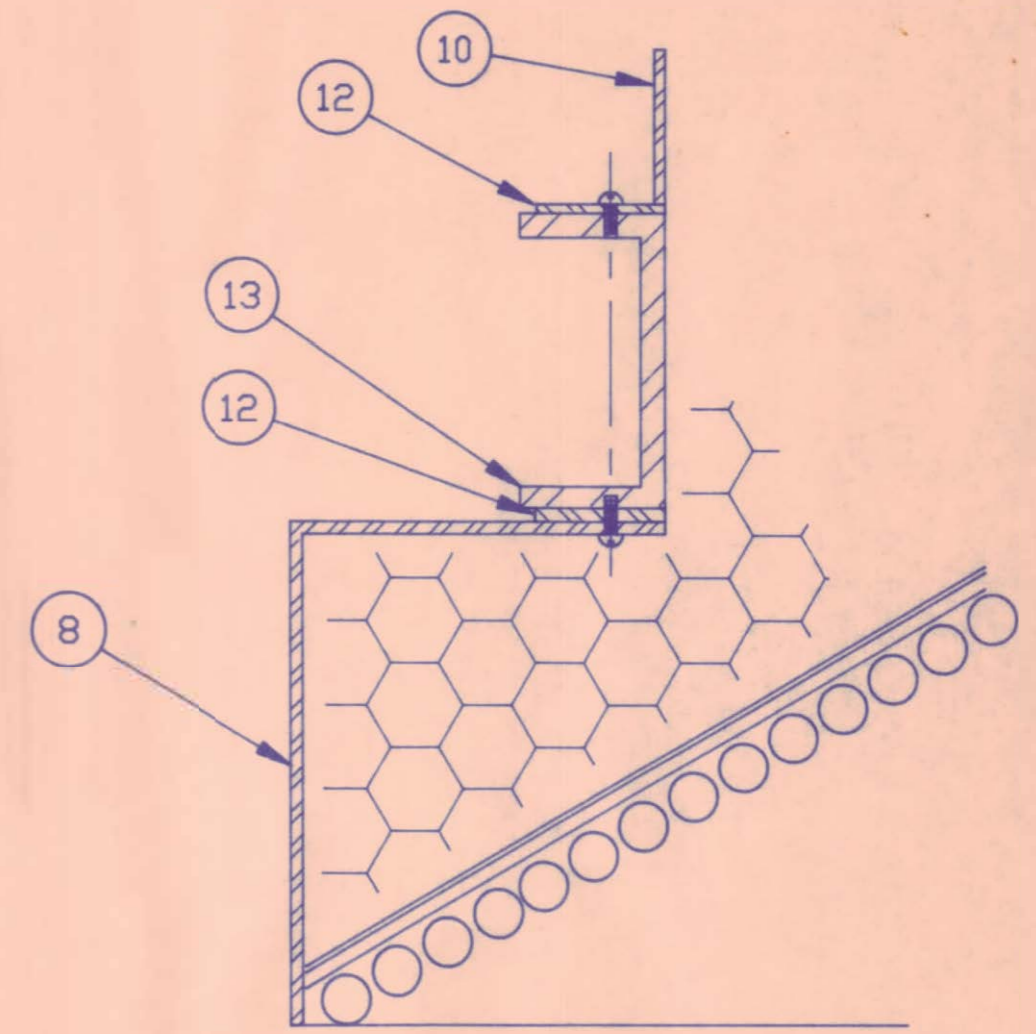


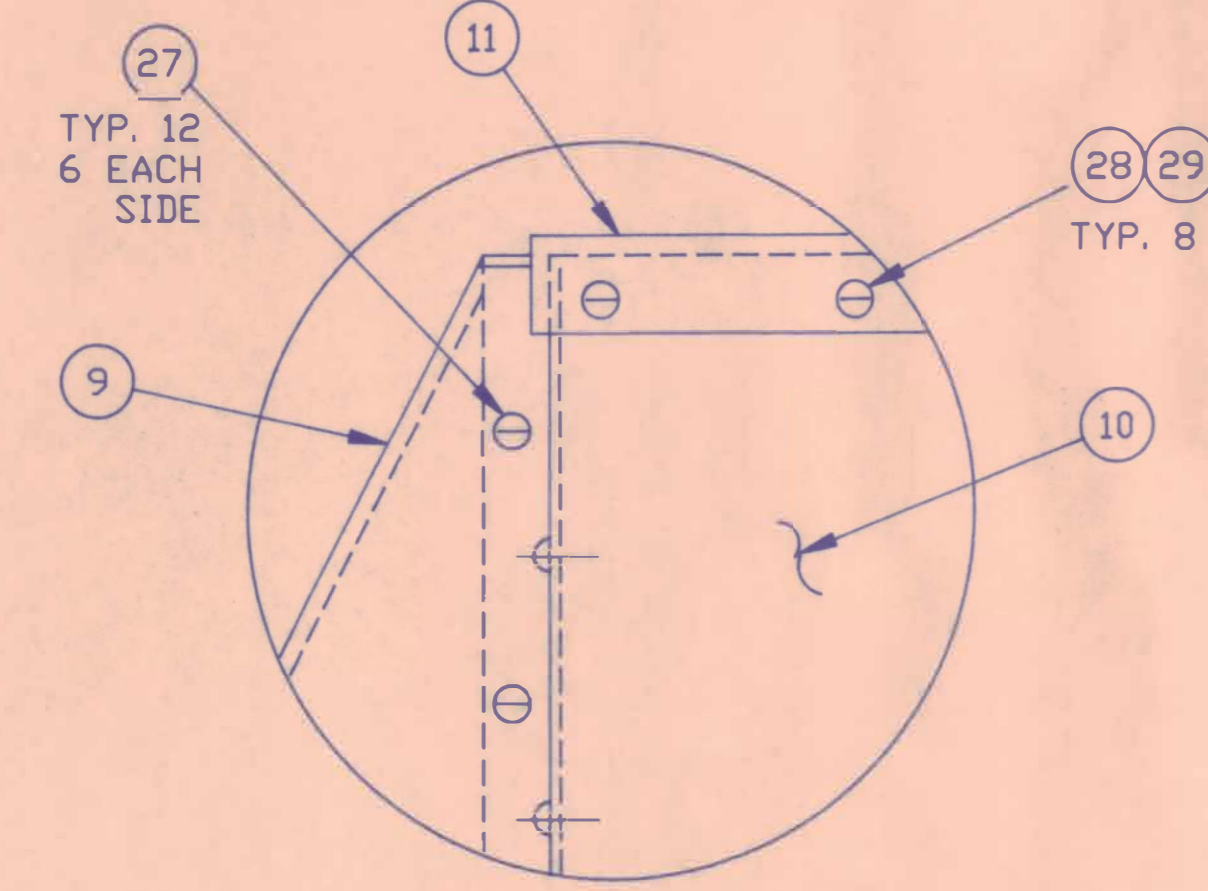
RECEIVER ASSEMBLY CROSS SECTION



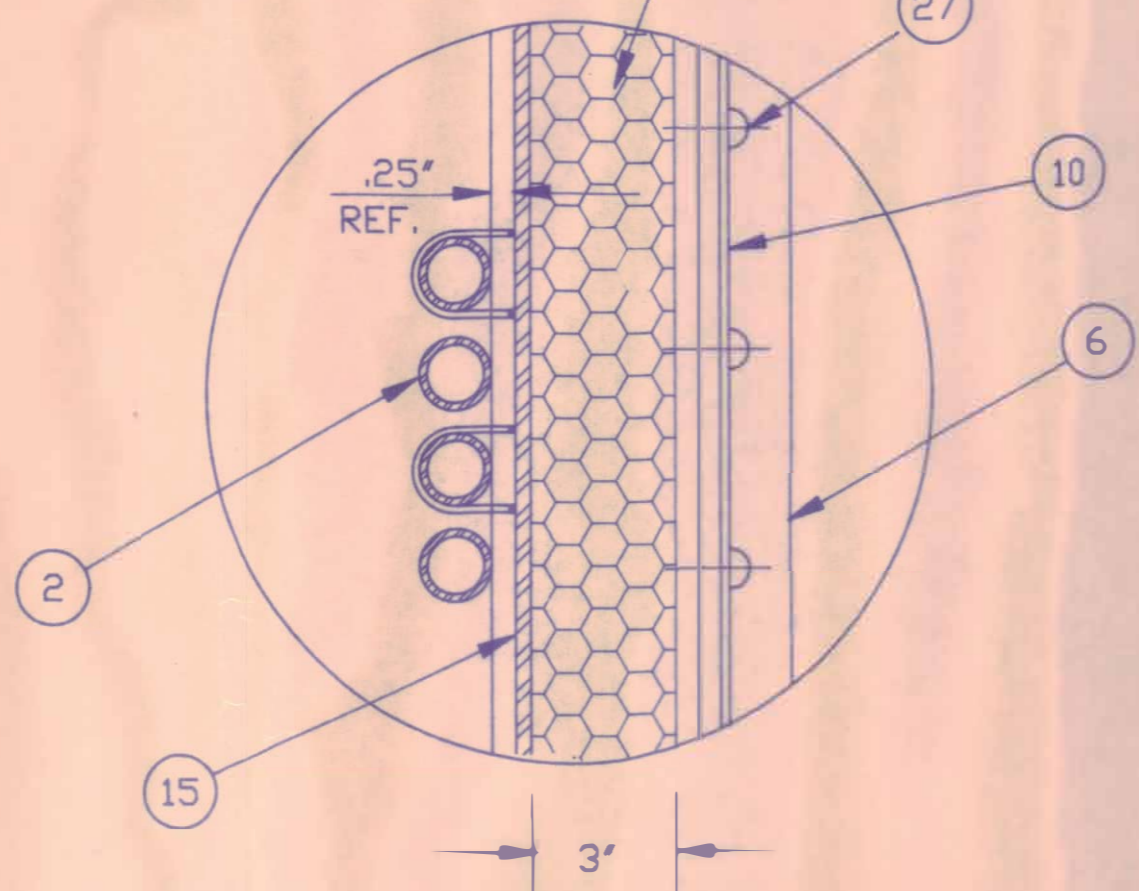
SECTION A - A



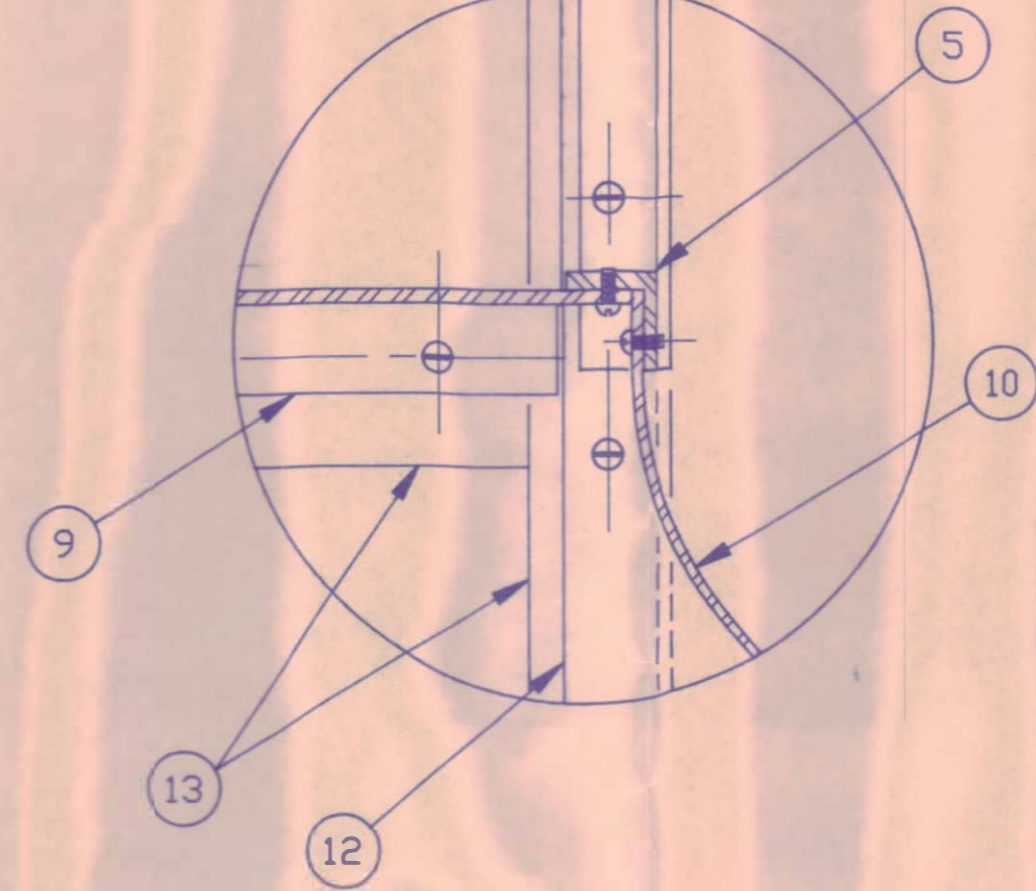
SECTION B - B



DETAIL - 1



DETAIL - 2



DETAIL - 3

ITEM	DESCRIPTION	MATERIAL	REFERENCE	QTY
1	APERTURE COIL BUNDLE-#1	LOW ALLOY ST	D2435-601	1
2	CYLIND.COIL BUNDLE-#2	LOW ALLOY ST	D2435-602	1
3	OUTLET COIL BUNDLE-#3	LOW-ALLOY ST	D2435-603	1
4				
5	HOUSING SUPPORT-SIDE 1	6061-T6 ALUM	D2431-602-1	1
6	HOUSING SUPPORT-SIDE 2	6061-T6 ALUM	D2431-602-2	1
7	HOUSING SUPPORT-TOP	6061-T6 ALUM	D2431-602-3	1
8	HOUSING SKIRT	6061-T6 ALUM	D2431-601-3	2
9	OUTLET COVER	6061-T6 ALUM	D2431-601-4	1
10	HOUSING SIDE	6061-T6 ALUM	D2431-601-2	2
11	HOUSING TOP	6061-T6 ALUM	D2431-601-1	1
12	FRAME COVER	6061-T6 ALUM	D2431-601-5	8
13	MOUNTING FRAME	6061-T6 ALUM	D2433-601	1
14	APERTURE COIL BACKING	304 S.S.	D2432-601	2
15	CYL.COIL TOP BACKING	304 S.S.	D2432-601-2	1
16	CYL.COIL BOTT BACKING	304 S.S.	D2432-601-3	1
17	OUTLET COIL BACKING	304 S.S.	D2432-601-4	1
18	RECEIV. COILS COVER	304 S.S.	D2432-601-5	1
19	1/2"-13 X 1-1/4" SS HH BOLT	304 S.S.		4
20				
21	1/2"-13 SS HH NUT	304 S.S.		4
22				
23	1/2" SS FLAT WASHER	304 S.S.		4
24				
25				
26	3/8" SS LOCK WASHER	304 S.S.		16
27	#10 X 1/2" SELF TAPPING SMS SS	304 S.S.		82
28	10-32 X 1/2" SCREWS	304 S.S.		8
29	#10-32 RIVNUT	304 S.S.		8
30	INSULATION-KAD BLANKET OR EQ		AS REQD	
31	SEALANT			AS REQD

NOTES:

THIS RECEIVER IS AT THE FOCAL POINT OF A 300 SQUARE METER SOLAR COLLECTOR WHICH FOCUSES ABOUT 900,000 Btuh INTO THE 30" APERTURE 600-800 LBS PER HOUR OF WATER ARE PUMPED CONTINUOUSLY THROUGH THE TUBES.

NOTE 1: UNIONS SHOULD BE ACCESSIBLE BY REMOVAL OF SKIRT, BACK, SIDE, OR OUTLET COVER. WRENCHES NEED AN ARC OF AT LEAST 90° ON THE NUTS. DETAILED ASSEMBLY PROCEDURES WILL BE PUBLISHED AS A CONTROLLED DOCUMENT 2430-202 AFTER THE ASSEMBLY OF THE FIRST UNIT.

NOTE 2: THE NORMAL OPERATING PARAMETERS ARE: PRESSURE AT THE INLET UNION 'E' WILL BE 950 PSI @ 200°F.

AN ORFICE AT UNION 'F' WILL DROP THE THE PRESSURE TO 850 PSI AT THAT POINT.

NOTE 3: EXIT TEMPERATURE AT POINT 'G' WILL BE BETWEEN 500 - 550° F AND BETWEEN 820 - 840 PSI

NOTE 4: RATED PRESSURE AND TEMPERATURE FOR ASME CERTIFICATION ARE 1400 psi AT 850° F

SEALANT TO BE APPLIED LIBERALLY TO ALL SEAMS AFTER ASSEMBLY IS COMPLETED.

\$ 2400 / Receiver

REF DWG.	REV.	DESCRIPTION	DATE	R.L.M.
	C	REVISED & REDRAWN	3/88	R.L.M.
QTY REQ	MATERIAL	WANTED BY	REV.	DATE
UNLESS OTHERWISE SPECIFIED				
DIMENSIONS ARE IN INCHES				
TOLERANCES - NOT ACCUMULATIVE				
LOCATION OF HOLES = ± 1/16"				
LINEAR DIMENSIONS = ± 1/8"				
TRUE SQUARE = ± 1/8"				
ANGULARITY TOLERANCE ±1/2°				
XXXX	ALL CUT EDGES	DRAWN BY	DATE	APPROVED
The information contained in this drawing is confidential and the property of Power Kinetic Inc. and is not to be disclosed to others or reproduced in any manner except by written permission of Power Kinetics				
DRAWING NO. D 2430-401				REV. C